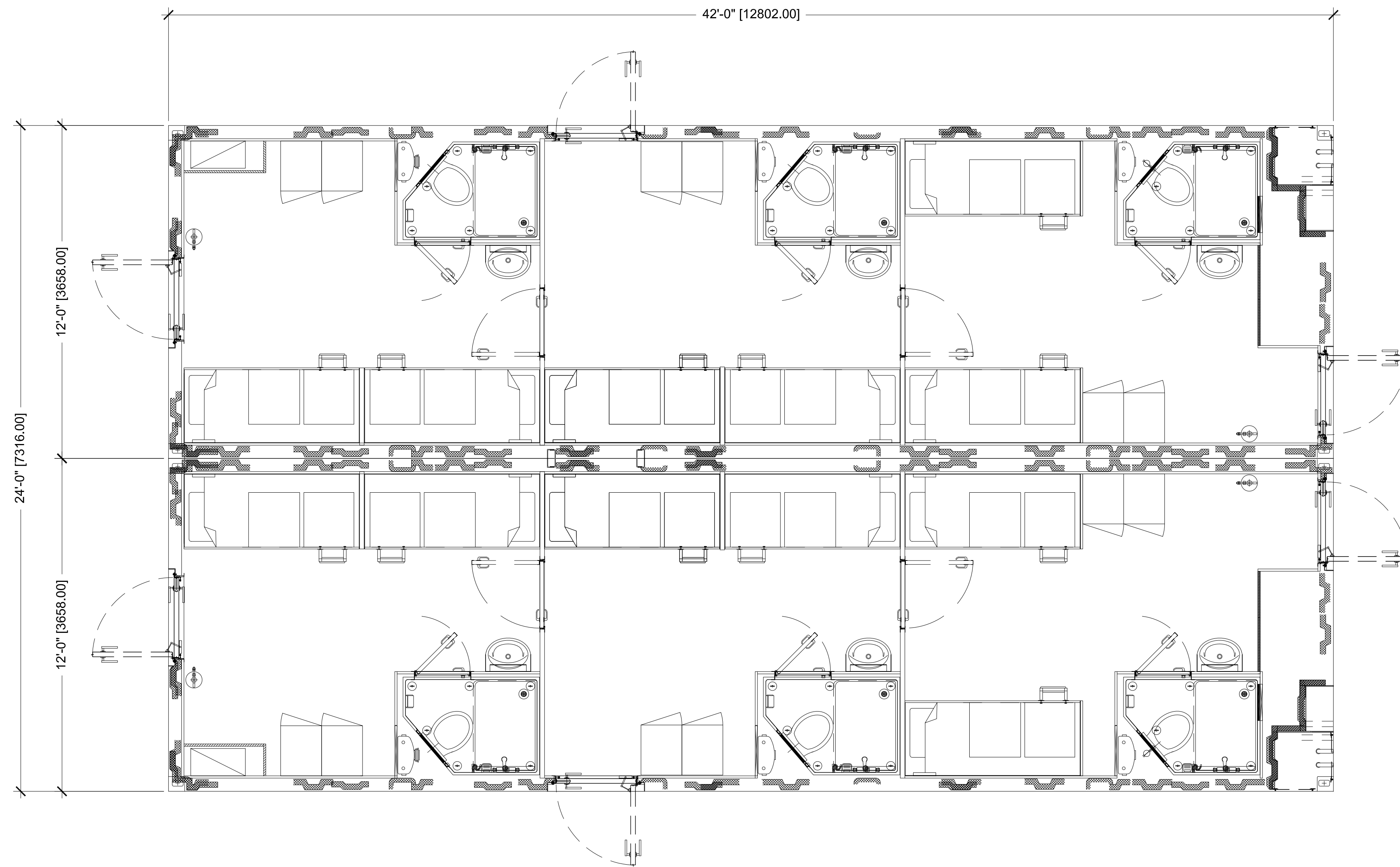


REVISION HISTORY				
REV	DESCRIPTION	DATE	BY	CHECKED
A	ISSUED FOR REVIEW	11/15/2023	JR	DO
B	ADDED A1.3 FOR 12X40 ASSET	12/6/2023	JR	DO



THE INFORMATION CONTAINED HEREIN IS PROPRIETARY TO REDGUARD, LLC AND SHALL NOT BE REPRODUCED OR DISCLOSED IN WHOLE OR IN PART OR USED FOR ANY PURPOSE EXCEPT WHEN SUCH USER POSSESSES DIRECT WRITTEN AUTHORIZATION FROM REDGUARD, LLC

EXPORT CONTROLLED DATA: THIS DOCUMENT MAY CONTAIN TECHNICAL INFORMATION WHOSE EXPORT IS GOVERNED BY THE UNITED STATES DEPARTMENTS OF COMMERCE AND STATE. IT IS THE RESPONSIBILITY OF THE RECIPIENT(S) OF THIS DRAWING TO ENSURE THAT ITS CONTENTS ARE CONTROLLED AS SUCH TO REMAIN IN COMPLETE COMPLIANCE WITH THE U.S. ARMS EXPORT CONTROL ACT, THE INTERNATIONAL TRAFFIC IN ARMS REGULATIONS, AND THE EXPORT ADMINISTRATION ACT.



ARMODA

2317 ENGINEERS RD.
BELLE CHASSE, LA 70037

PH: 855.733.4827

FAX: 316.440.1800

www.armoda.com

HORNBECK OFFSHORE

24' X 42' X 21'

FLOOR PLAN

Q#: T002084

PROJECT MANAGER: TM

DRAWN BY: JR

DATE: 11/15/2023

FILE: A-004 24X42 FP

SCALE: 3/8" = 1'-0"

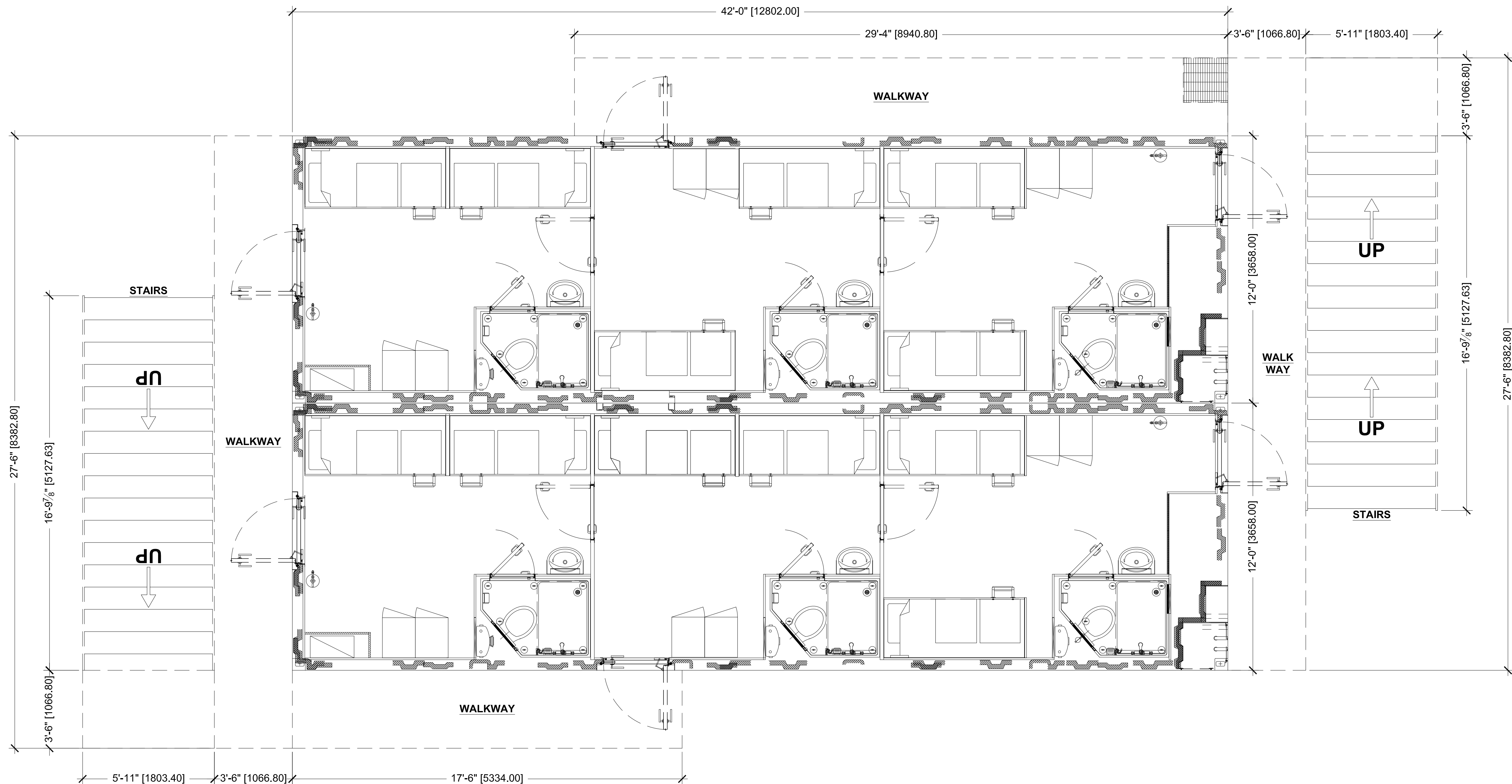
REVISION: B

SHEET: A1.1

**Q# T002084 HORNBECK OFFSHORE HOS ACHIEVER
FLOOR PLAN - (BOTTOM FLOOR)
24' X 42' X 21'**

SCALE LISTED IS VALID
ONLY FOR "D" SIZE PAPER
(36" X 24")

REVISION HISTORY				
REV	DESCRIPTION	DATE	BY	CHECKED
A	ISSUED FOR REVIEW	11/15/2023	JR	DO
B	ADDED A1.3 FOR 12X40 ASSET	12/6/2023	JR	DO



THE INFORMATION CONTAINED HEREIN IS PROPRIETARY TO REDGUARD, LLC AND SHALL NOT BE REPRODUCED OR DISCLOSED IN WHOLE OR IN PART OR USED FOR ANY PURPOSE EXCEPT WHEN SUCH USER POSSESSES DIRECT WRITTEN AUTHORIZATION FROM REDGUARD, LLC

EXPORT CONTROLLED DATA: THIS DOCUMENT MAY CONTAIN TECHNICAL INFORMATION WHOSE EXPORT IS GOVERNED BY THE UNITED STATES DEPARTMENTS OF COMMERCE AND STATE. IT IS THE RESPONSIBILITY OF THE RECIPIENT(S) OF THIS DRAWING TO ENSURE THAT ITS CONTENTS ARE CONTROLLED AS SUCH TO REMAIN IN COMPLETE COMPLIANCE WITH THE U.S. ARMS EXPORT CONTROL ACT, THE INTERNATIONAL TRAFFIC IN ARMS REGULATIONS, AND THE EXPORT ADMINISTRATION ACT.



ARMODA

2317 ENGINEERS RD.
 BELLE CHASSE, LA 70037
 PH: 855.733.4827
 FAX: 316.440.1800
www.armoda.com

HORNBECK OFFSHORE

24' X 42' X 21'

FLOOR PLAN

Q#: T002084

PROJECT MANAGER: TM

DRAWN BY: JR

DATE: 11/15/2023

FILE: A-004 24X42 FP

SCALE: 3/8" = 1'-0"

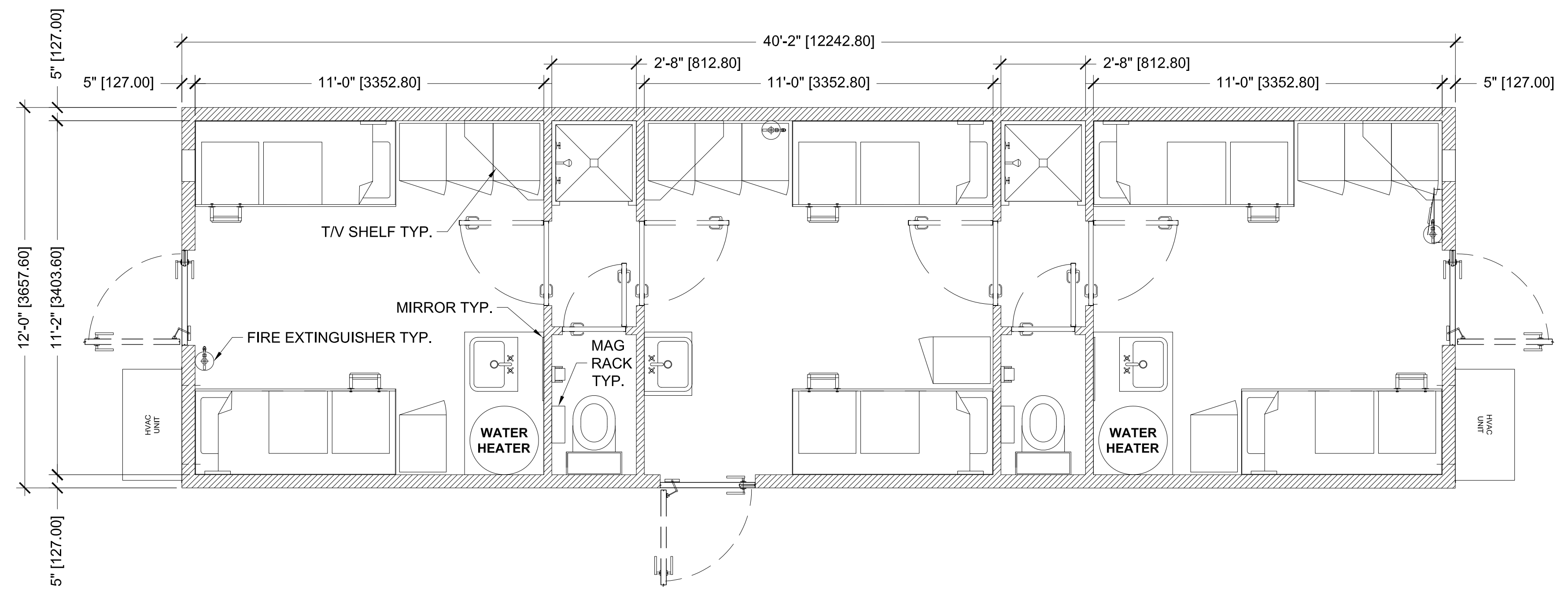
REVISION: B

SHEET: A1.2

**Q# T002084 HORNBECK OFFSHORE HOS ACHIEVER
 FLOOR PLAN - (TOP FLOOR)
 24' X 42' X 21'**

**SCALE LISTED IS VALID
 ONLY FOR "D" SIZE PAPER
 (36" X 24")**

REVISION HISTORY				
REV	DESCRIPTION	DATE	BY	CHECKED
A	ISSUED FOR REVIEW	11/15/2023	JR	DO
B	ADDED A1.3 FOR 12X40 ASSET	12/6/2023	JR	DO



THE INFORMATION CONTAINED HEREIN IS PROPRIETARY TO REDGUARD, LLC AND SHALL NOT BE REPRODUCED OR DISCLOSED IN WHOLE OR IN PART OR USED FOR ANY PURPOSE EXCEPT WHEN SUCH USER POSSESSES DIRECT WRITTEN AUTHORIZATION FROM REDGUARD, LLC

EXPORT CONTROLLED DATA: THIS DOCUMENT MAY CONTAIN TECHNICAL INFORMATION WHOSE EXPORT IS GOVERNED BY THE UNITED STATES DEPARTMENTS OF COMMERCE AND STATE. IT IS THE RESPONSIBILITY OF THE RECIPIENT(S) OF THIS DRAWING TO ENSURE THAT ITS CONTENTS ARE CONTROLLED AS SUCH TO REMAIN IN COMPLETE COMPLIANCE WITH THE U.S. ARMS EXPORT CONTROL ACT, THE INTERNATIONAL TRAFFIC IN ARMS REGULATIONS, AND THE EXPORT ADMINISTRATION ACT.



2317 ENGINEERS RD.
 BELLE CHASSE, LA 70037
 PH: 855.733.4827
 FAX: 316.440.1800
www.armoda.com

HORNBECK OFFSHORE

12' X 40' X 9'-6"

FLOOR PLAN

Q#: T002084

PROJECT MANAGER: TM

DRAWN BY: JR

DATE: 11/15/2023

FILE: A-004 24X42 FP

SCALE: 3/8" = 1'-0"

REVISION: B

SHEET: A1.3

**Q# T002084 HORNBECK OFFSHORE HOS ACHIEVER
 FLOOR PLAN
 12' X 40' X 9'-6"**

**SCALE LISTED IS VALID
 ONLY FOR "D" SIZE PAPER
 (36" X 24")**