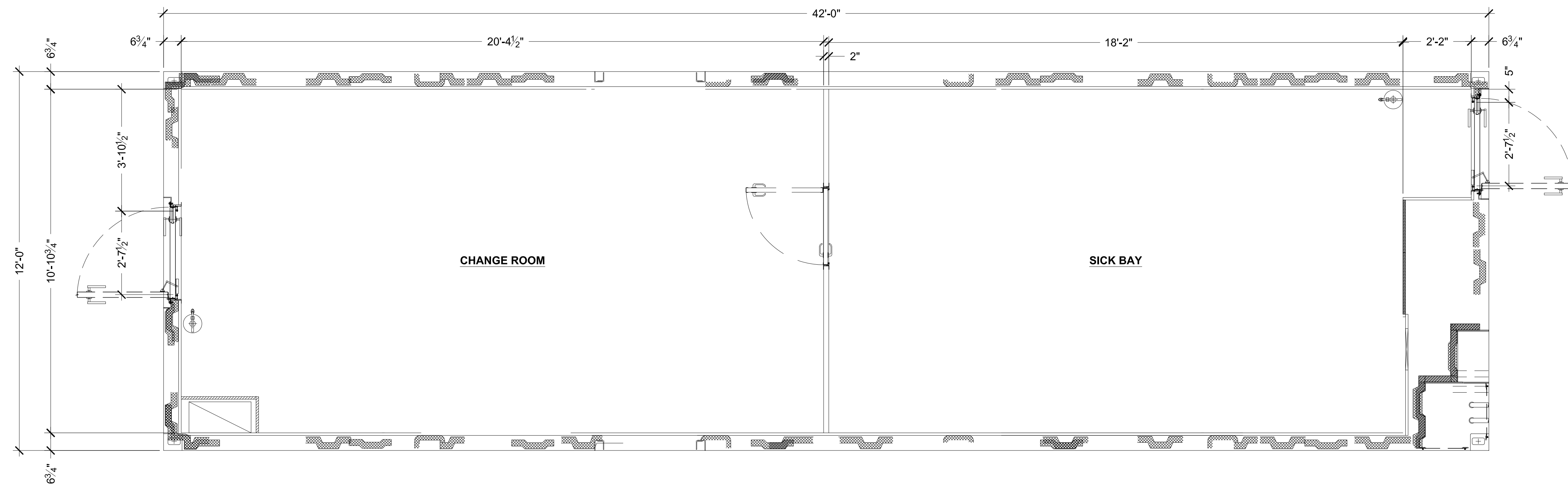


REVISION HISTORY				
REV	DESCRIPTION	DATE	BY	CHECKED
A	ISSUED FOR REVIEW	9/5/2024	JR	JLL



THE INFORMATION CONTAINED HEREIN IS PROPRIETARY TO REDGUARD, LLC AND SHALL NOT BE REPRODUCED OR DISCLOSED IN WHOLE OR IN PART OR USED FOR ANY PURPOSE EXCEPT WHEN SUCH USER POSSESSES DIRECT WRITTEN AUTHORIZATION FROM REDGUARD, LLC

EXPORT CONTROLLED DATA: THIS DOCUMENT MAY CONTAIN TECHNICAL INFORMATION WHOSE EXPORT IS GOVERNED BY THE UNITED STATES DEPARTMENTS OF COMMERCE AND STATE. IT IS THE RESPONSIBILITY OF THE RECIPIENT(S) OF THIS DRAWING TO ENSURE THAT ITS CONTENTS ARE CONTROLLED AS SUCH TO REMAIN IN COMPLETE COMPLIANCE WITH THE U.S. ARMS EXPORT CONTROL ACT, THE INTERNATIONAL TRAFFIC IN ARMS REGULATIONS, AND THE EXPORT ADMINISTRATION ACT.



2317 ENGINEERS RD.  
 BELLE CHASSE, LA 70037  
 FAX: 316.440.1800  
 www.armoda.com

EDISON CHOUËST

12' X 42' X 10'-6"

FLOOR PLAN

CP#: A-013

PROJECT MANAGER: MR

DRAWN BY: JR

DATE: 9/5/2024

FILE: A-013 12X42 FP

SCALE: 1/2" = 1'-0"

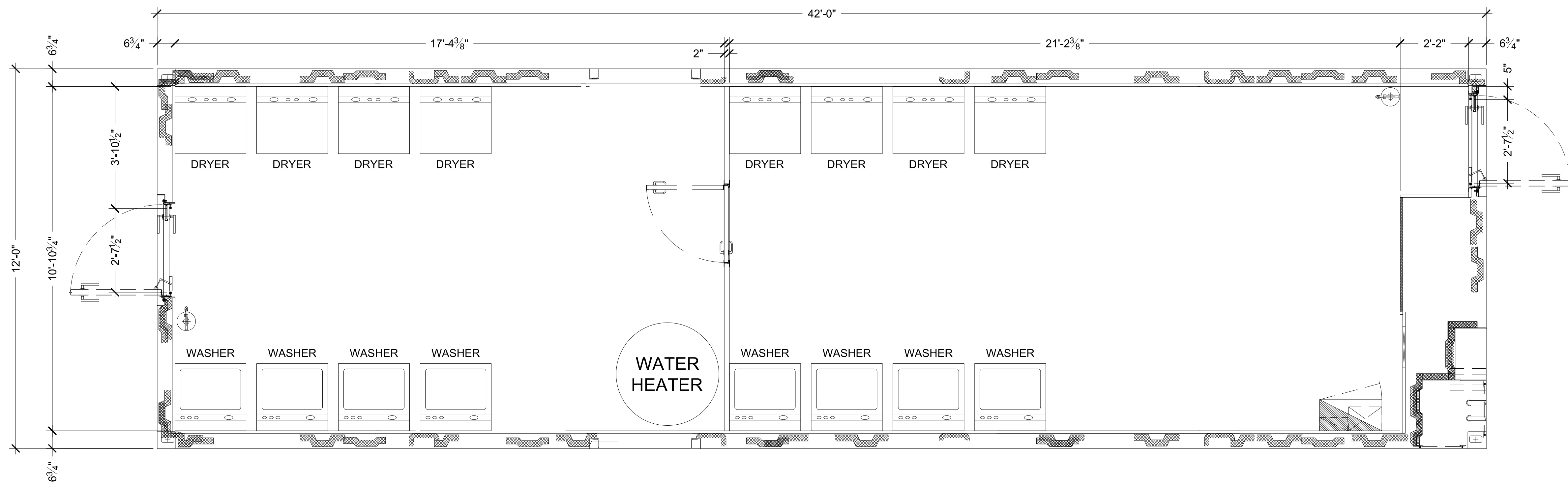
REVISION: A

SHEET: A1.1

**A-013 EDISON CHOUËST  
 FLOOR PLAN - CHANGE ROOM / SICK BAY  
 12' X 42' X 10'-6"**

**SCALE LISTED IS VALID  
 ONLY FOR "D" SIZE PAPER  
 (36" X 24")**

REVISION HISTORY				
REV	DESCRIPTION	DATE	BY	CHECKED
A	ISSUED FOR REVIEW	9/5/2024	JR	JLL



THE INFORMATION CONTAINED HEREIN IS PROPRIETARY TO REDGUARD, LLC AND SHALL NOT BE REPRODUCED OR DISCLOSED IN WHOLE OR IN PART OR USED FOR ANY PURPOSE EXCEPT WHEN SUCH USER POSSESSES DIRECT WRITTEN AUTHORIZATION FROM REDGUARD, LLC

EXPORT CONTROLLED DATA: THIS DOCUMENT MAY CONTAIN TECHNICAL INFORMATION WHOSE EXPORT IS GOVERNED BY THE UNITED STATES DEPARTMENTS OF COMMERCE AND STATE. IT IS THE RESPONSIBILITY OF THE RECIPIENT(S) OF THIS DRAWING TO ENSURE THAT ITS CONTENTS ARE CONTROLLED AS SUCH TO REMAIN IN COMPLETE COMPLIANCE WITH THE U.S. ARMS EXPORT CONTROL ACT, THE INTERNATIONAL TRAFFIC IN ARMS REGULATIONS, AND THE EXPORT ADMINISTRATION ACT.



2317 ENGINEERS RD.  
 BELLE CHASSE, LA 70037  
 FAX: 316.440.1800  
 www.armoda.com

EDISON CHOUEST

12' X 42' X 10'-6"

FLOOR PLAN

CP#: A-013

PROJECT MANAGER: MR

DRAWN BY: JR

DATE: 9/5/2024

FILE: A-013 12X42 FP

SCALE: 1/2" = 1'-0"

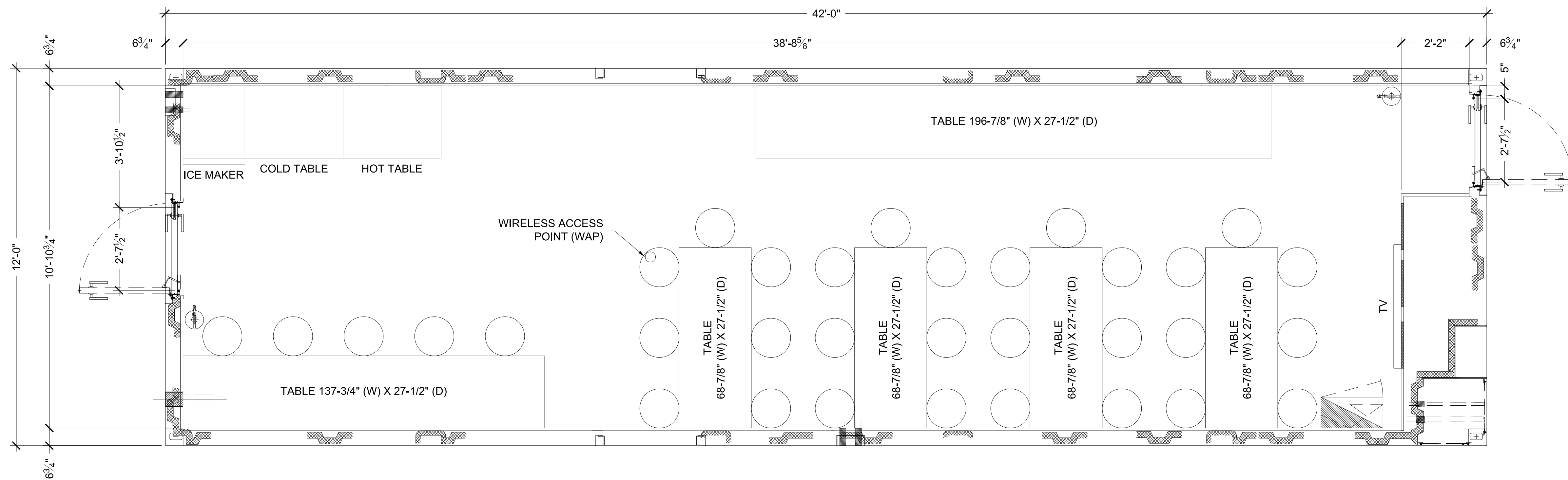
REVISION: A

SHEET: A1.2

**A-013 EDISON CHOUEST  
 FLOOR PLAN - LAUNDRY  
 12' X 42' X 10'-6"**

**SCALE LISTED IS VALID  
 ONLY FOR "D" SIZE PAPER  
 (36" X 24")**

REVISION HISTORY				
REV	DESCRIPTION	DATE	BY	CHECKED
A	ISSUED FOR REVIEW	9/5/2024	JR	JLL



THE INFORMATION CONTAINED HEREIN IS PROPRIETARY TO REDGUARD, LLC AND SHALL NOT BE REPRODUCED OR DISCLOSED IN WHOLE OR IN PART OR USED FOR ANY PURPOSE EXCEPT WHEN SUCH USER POSSESSES DIRECT WRITTEN AUTHORIZATION FROM REDGUARD, LLC

EXPORT CONTROLLED DATA: THIS DOCUMENT MAY CONTAIN TECHNICAL INFORMATION WHOSE EXPORT IS GOVERNED BY THE UNITED STATES DEPARTMENTS OF COMMERCE AND STATE. IT IS THE RESPONSIBILITY OF THE RECIPIENT(S) OF THIS DRAWING TO ENSURE THAT ITS CONTENTS ARE CONTROLLED AS SUCH TO REMAIN IN COMPLETE COMPLIANCE WITH THE U.S. ARMS EXPORT CONTROL ACT, THE INTERNATIONAL TRAFFIC IN ARMS REGULATIONS, AND THE EXPORT ADMINISTRATION ACT.



**ARMODA**

2317 ENGINEERS RD.  
 BELLE CHASSE, LA 70037  
 FAX: 316.440.1800  
[www.armoda.com](http://www.armoda.com)

EDISON CHOUEST

12' X 42' X 10'-6"

FLOOR PLAN

CP#: A-013

PROJECT MANAGER: MR

DRAWN BY: JR

DATE: 9/5/2024

FILE: A-013 12X42 FP

SCALE: 1/2" = 1'-0"

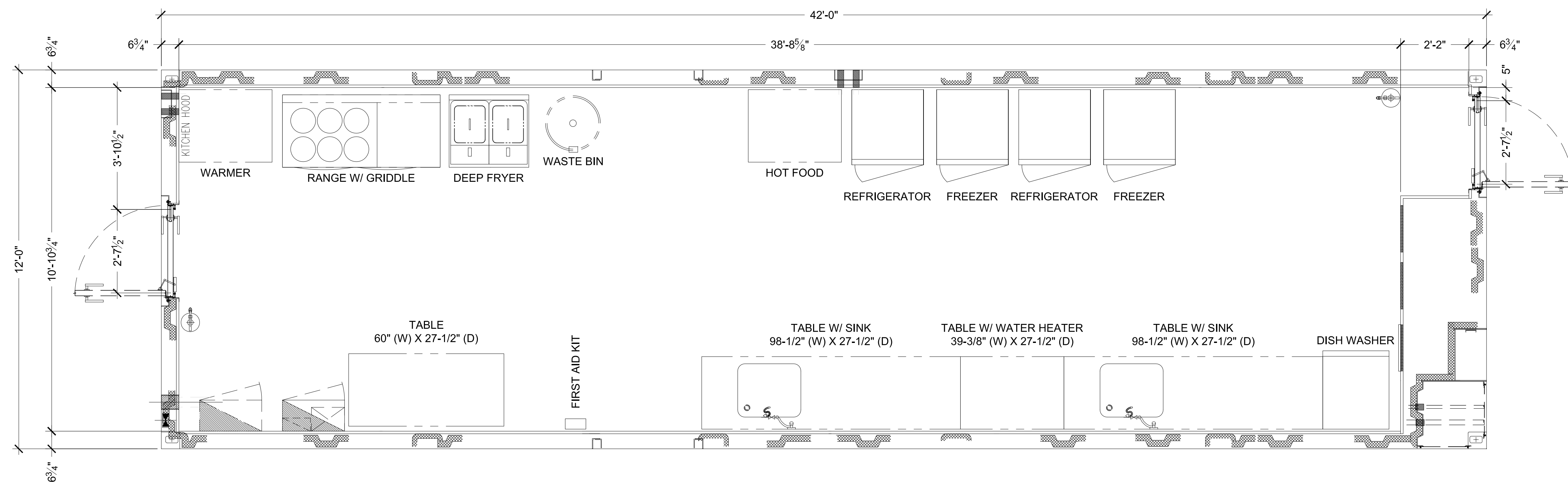
REVISION: A

SHEET: A1.3

**A-013 EDISON CHOUEST  
 FLOOR PLAN - DINER  
 12' X 42' X 10'-6"**

**SCALE LISTED IS VALID  
 ONLY FOR "D" SIZE PAPER  
 (36" X 24")**

REVISION HISTORY				
REV	DESCRIPTION	DATE	BY	CHECKED
A	ISSUED FOR REVIEW	9/5/2024	JR	JLL



THE INFORMATION CONTAINED HEREIN IS PROPRIETARY TO REDGUARD, LLC AND SHALL NOT BE REPRODUCED OR DISCLOSED IN WHOLE OR IN PART OR USED FOR ANY PURPOSE EXCEPT WHEN SUCH USER POSSESSES DIRECT WRITTEN AUTHORIZATION FROM REDGUARD, LLC

EXPORT CONTROLLED DATA: THIS DOCUMENT MAY CONTAIN TECHNICAL INFORMATION WHOSE EXPORT IS GOVERNED BY THE UNITED STATES DEPARTMENTS OF COMMERCE AND STATE. IT IS THE RESPONSIBILITY OF THE RECIPIENT(S) OF THIS DRAWING TO ENSURE THAT ITS CONTENTS ARE CONTROLLED AS SUCH TO REMAIN IN COMPLETE COMPLIANCE WITH THE U.S. ARMS EXPORT CONTROL ACT, THE INTERNATIONAL TRAFFIC IN ARMS REGULATIONS, AND THE EXPORT ADMINISTRATION ACT.



2317 ENGINEERS RD.  
 BELLE CHASSE, LA 70037  
 FAX: 316.440.1800  
 www.armoda.com

EDISON CHOUËST

12' X 42' X 10'-6"

FLOOR PLAN

CP#: A-013

PROJECT MANAGER: MR

DRAWN BY: JR

DATE: 9/5/2024

FILE: A-013 12X42 FP

SCALE: 1/2" = 1'-0"

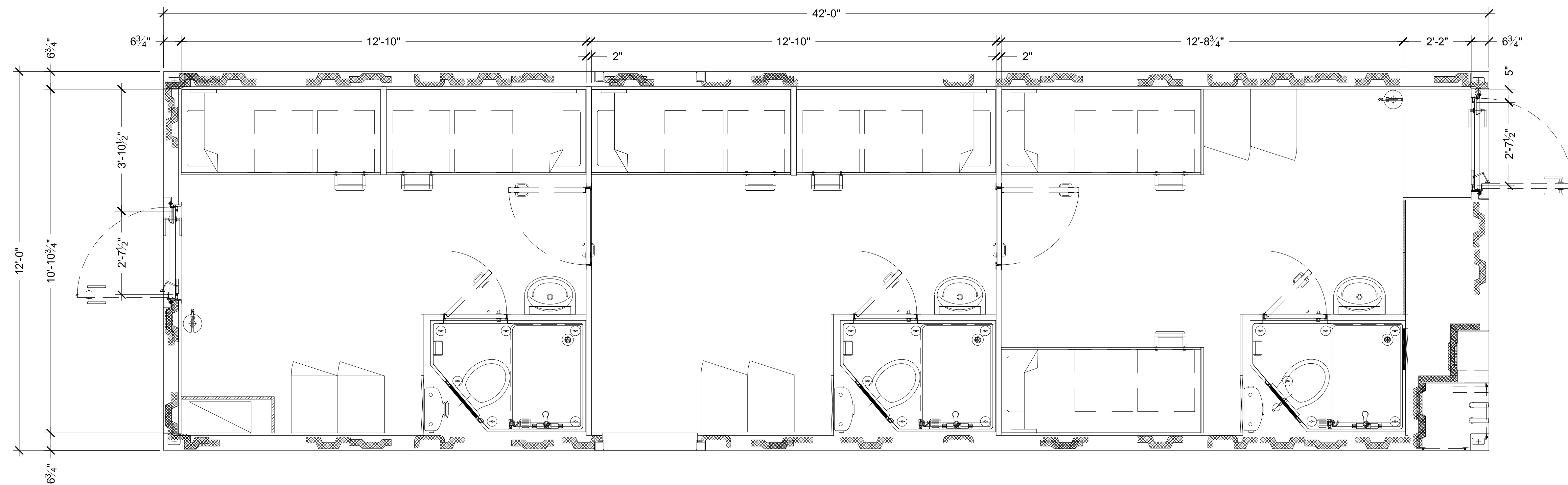
REVISION: A

SHEET: A1.4

**A-013 EDISON CHOUËST  
 FLOOR PLAN - GALLEY  
 12' X 42' X 10'-6"**

**SCALE LISTED IS VALID  
 ONLY FOR "D" SIZE PAPER  
 (36" X 24")**

REVISION HISTORY				
REV	DESCRIPTION	DATE	BY	CHECKED
A	ISSUED FOR REVIEW	9/5/2024	JR	JLL



**A-013 EDISON CHOUEST  
FLOOR PLAN - ACCOMMODATION  
12' X 42' X 10'-6"**

**SCALE LISTED IS VALID  
ONLY FOR "D" SIZE PAPER  
(36" X 24")**

THE INFORMATION CONTAINED HEREIN IS PROPRIETARY TO REDGUARD, LLC AND SHALL NOT BE REPRODUCED OR DISCLOSED IN WHOLE OR IN PART OR USED FOR ANY PURPOSE EXCEPT WHEN SUCH USER POSSESSES DIRECT WRITTEN AUTHORIZATION FROM REDGUARD, LLC

EXPORT CONTROLLED DATA: THIS DOCUMENT MAY CONTAIN TECHNICAL INFORMATION WHOSE EXPORT IS GOVERNED BY THE UNITED STATES DEPARTMENTS OF COMMERCE AND STATE. IT IS THE RESPONSIBILITY OF THE RECIPIENT(S) OF THIS DRAWING TO ENSURE THAT ITS CONTENTS ARE CONTROLLED AS SUCH TO REMAIN IN COMPLETE COMPLIANCE WITH THE U.S. ARMS EXPORT CONTROL ACT, THE INTERNATIONAL TRAFFIC IN ARMS REGULATIONS, AND THE EXPORT ADMINISTRATION ACT.



2317 ENGINEERS RD.  
BELLE CHASSE, LA 70037  
FAX: 316.440.1800  
[www.armoda.com](http://www.armoda.com)

EDISON CHOUEST

12' X 42' X 10'-6"

FLOOR PLAN

CP#: A-013

PROJECT MANAGER: MR

DRAWN BY: JR

DATE: 9/5/2024

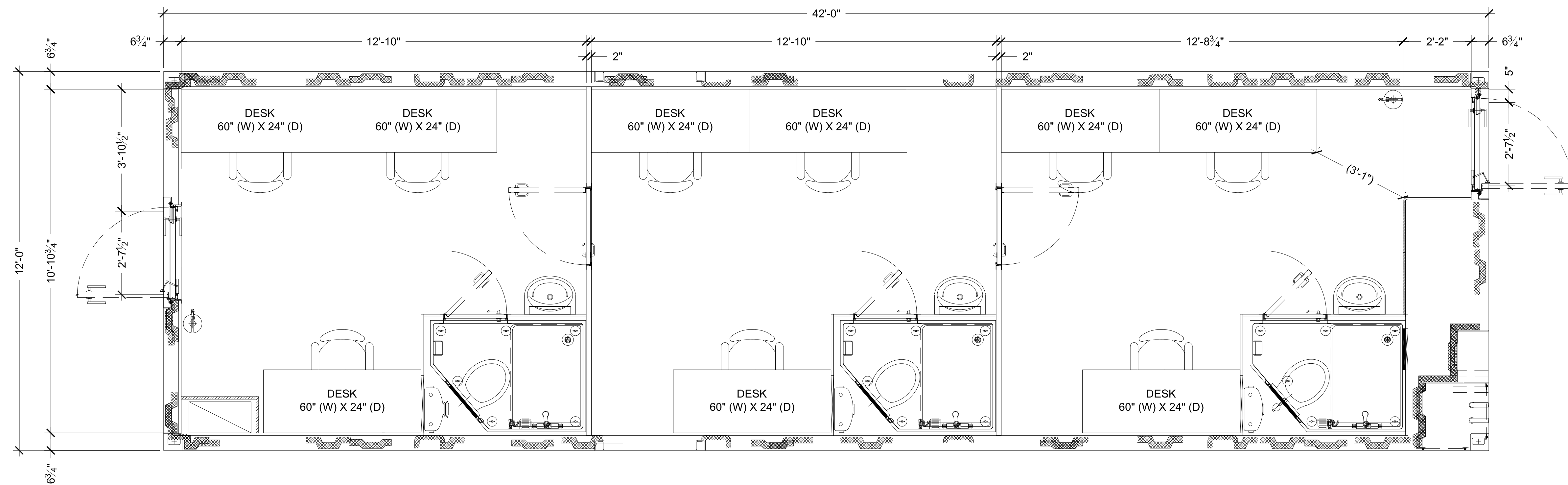
FILE: A-013 12X42 FP

SCALE: 1/2" = 1'-0"

REVISION: A

SHEET: A1.5

REVISION HISTORY				
REV	DESCRIPTION	DATE	BY	CHECKED
A	ISSUED FOR REVIEW	9/5/2024	JR	JLL



THE INFORMATION CONTAINED HEREIN IS PROPRIETARY TO REDGUARD, LLC AND SHALL NOT BE REPRODUCED OR DISCLOSED IN WHOLE OR IN PART OR USED FOR ANY PURPOSE EXCEPT WHEN SUCH USER POSSESSES DIRECT WRITTEN AUTHORIZATION FROM REDGUARD, LLC

EXPORT CONTROLLED DATA: THIS DOCUMENT MAY CONTAIN TECHNICAL INFORMATION WHOSE EXPORT IS GOVERNED BY THE UNITED STATES DEPARTMENTS OF COMMERCE AND STATE. IT IS THE RESPONSIBILITY OF THE RECIPIENT(S) OF THIS DRAWING TO ENSURE THAT ITS CONTENTS ARE CONTROLLED AS SUCH TO REMAIN IN COMPLETE COMPLIANCE WITH THE U.S. ARMS EXPORT CONTROL ACT, THE INTERNATIONAL TRAFFIC IN ARMS REGULATIONS, AND THE EXPORT ADMINISTRATION ACT.



2317 ENGINEERS RD.  
 BELLE CHASSE, LA 70037  
 FAX: 316.440.1800  
[www.armoda.com](http://www.armoda.com)

EDISON CHOUET

12' X 42' X 10'-6"

FLOOR PLAN

CP#: A-013

PROJECT MANAGER: MR

DRAWN BY: JR

DATE: 9/5/2024

FILE: A-013 12X42 FP

SCALE: 1/2" = 1'-0"

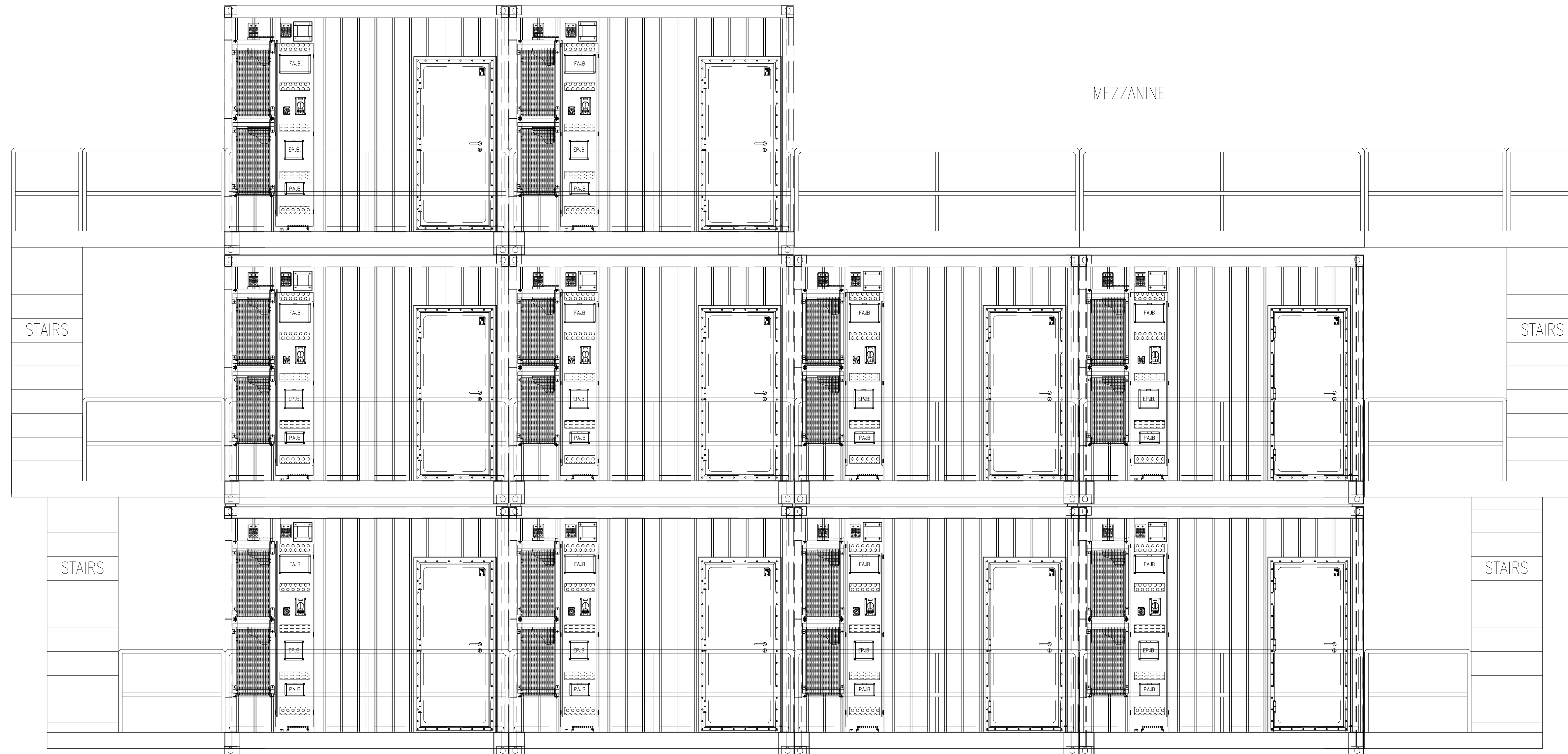
REVISION: A

SHEET: A1.6

**A-013 EDISON CHOUET  
 FLOOR PLAN - OFFICE  
 12' X 42' X 10'-6"**

**SCALE LISTED IS VALID  
 ONLY FOR "D" SIZE PAPER  
 (36" X 24")**

REVISION HISTORY				
REV	DESCRIPTION	DATE	BY	CHECKED
A	ISSUED FOR REVIEW	9/5/2024	JR	JLL



THE INFORMATION CONTAINED HEREIN IS PROPRIETARY TO REDGUARD, LLC AND SHALL NOT BE REPRODUCED OR DISCLOSED IN WHOLE OR IN PART OR USED FOR ANY PURPOSE EXCEPT WHEN SUCH USER POSSESSES DIRECT WRITTEN AUTHORIZATION FROM REDGUARD, LLC

EXPORT CONTROLLED DATA: THIS DOCUMENT MAY CONTAIN TECHNICAL INFORMATION WHOSE EXPORT IS GOVERNED BY THE UNITED STATES DEPARTMENTS OF COMMERCE AND STATE. IT IS THE RESPONSIBILITY OF THE RECIPIENT(S) OF THIS DRAWING TO ENSURE THAT ITS CONTENTS ARE CONTROLLED AS SUCH TO REMAIN IN COMPLETE COMPLIANCE WITH THE U.S. ARMS EXPORT CONTROL ACT, THE INTERNATIONAL TRAFFIC IN ARMS REGULATIONS, AND THE EXPORT ADMINISTRATION ACT.



2317 ENGINEERS RD.  
 BELLE CHASSE, LA 70037  
 FAX: 316.440.1800  
 www.armoda.com

EDISON CHOUËST

12' X 42' X 10'-6"

EXTERIOR ELEVATION

CP#: A-013

PROJECT MANAGER: MR

DRAWN BY: JR

DATE: 9/5/2024

FILE: A-013 12X42 FP

SCALE: 3/8" = 1'-0"

REVISION: A

SHEET: A1.7

**A-013 EDISON CHOUËST  
 EXTERIOR ELEVATION  
 12' X 42' X 10'-6"**

**SCALE LISTED IS VALID  
 ONLY FOR "D" SIZE PAPER  
 (36" X 24")**