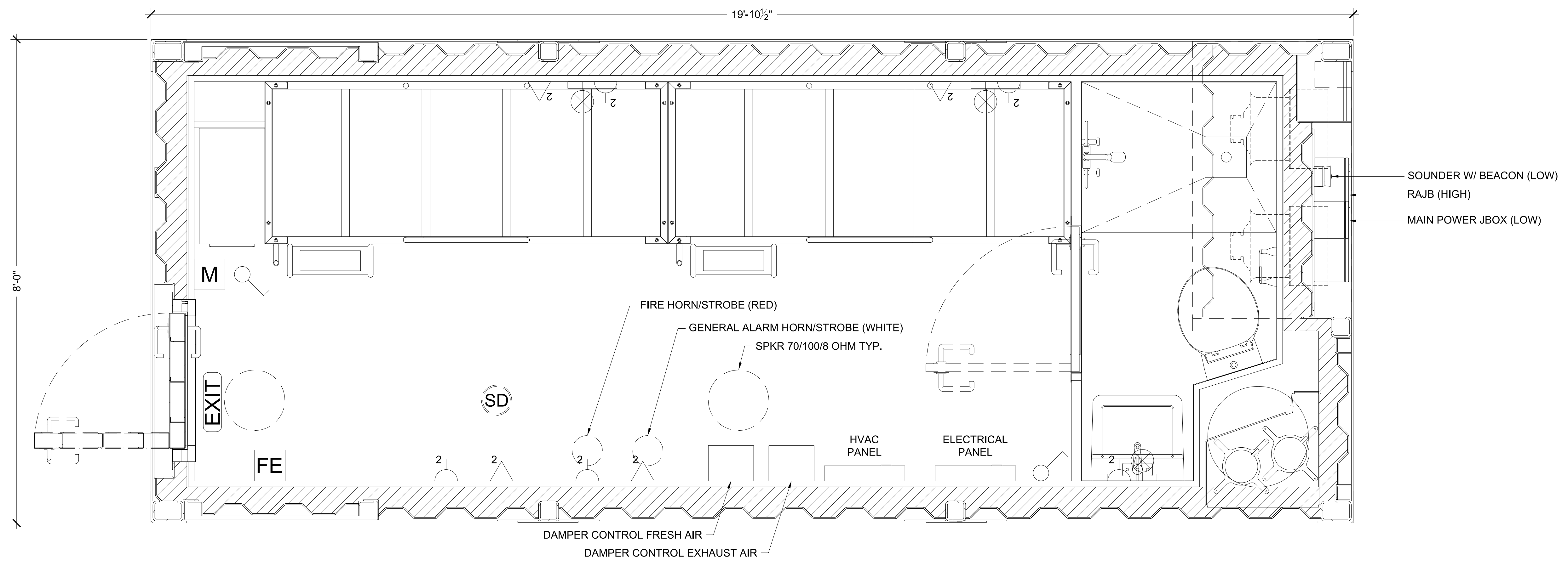


REVISION HISTORY				
REV	DESCRIPTION	DATE	BY	CHECKED
A	ISSUED FOR REVIEW	1/15/2025	JR	JLL
B	UPDATED PER CUSTOMER COMMENTS	2/4/2025	JR	JLL



THE INFORMATION CONTAINED HEREIN IS PROPRIETARY TO REDGUARD, LLC AND SHALL NOT BE REPRODUCED OR DISCLOSED IN WHOLE OR IN PART OR USED FOR ANY PURPOSE EXCEPT WHEN SUCH USER POSSESSES DIRECT WRITTEN AUTHORIZATION FROM REDGUARD, LLC

EXPORT CONTROLLED DATA: THIS DOCUMENT MAY CONTAIN TECHNICAL INFORMATION WHOSE EXPORT IS GOVERNED BY THE UNITED STATES DEPARTMENTS OF COMMERCE AND STATE. IT IS THE RESPONSIBILITY OF THE RECIPIENT(S) OF THIS DRAWING TO ENSURE THAT ITS CONTENTS ARE CONTROLLED AS SUCH TO REMAIN IN COMPLETE COMPLIANCE WITH THE U.S. ARMS EXPORT CONTROL ACT, THE INTERNATIONAL TRAFFIC IN ARMS REGULATIONS, AND THE EXPORT ADMINISTRATION ACT.



4817 S LEWIS ST.
 NEW IBERIA, LA 70560
 PH: 504.588.2551
 www.armoda.com

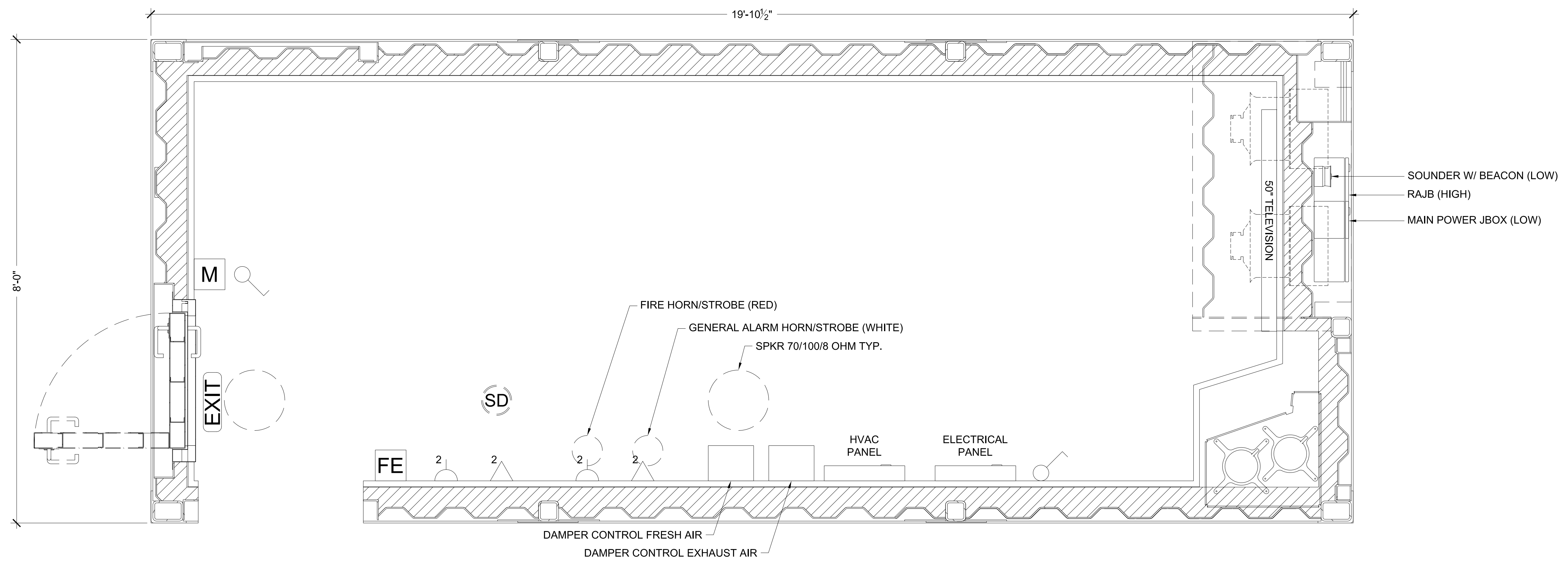
SVA
 8' X 19'-10 1/2" X 9'-6"
 FLOOR PLAN

A#: 019
 PROJECT MANAGER: TM
 DRAWN BY: JR
 DATE: 1/15/2025
 FILE: A-019 8X20 FP
 SCALE: 1" = 1'-0"
 REVISION: B
 SHEET: A1.1

**A-019 SUPPORT VESSELS OF ALASKA (SVA)
 ACCOMMODATION FLOOR PLAN - Q#300031 SVA ARCTIC SEAL
 8' X 19'-10 1/2" X 9'-6"**

SCALE LISTED IS VALID
 ONLY FOR "D" SIZE PAPER
 (36" X 24")

REVISION HISTORY				
REV	DESCRIPTION	DATE	BY	CHECKED
A	ISSUED FOR REVIEW	1/15/2025	JR	JLL
B	UPDATED PER CUSTOMER COMMENTS	2/4/2025	JR	JLL



THE INFORMATION CONTAINED HEREIN IS PROPRIETARY TO REDGUARD, LLC AND SHALL NOT BE REPRODUCED OR DISCLOSED IN WHOLE OR IN PART OR USED FOR ANY PURPOSE EXCEPT WHEN SUCH USER POSSESSES DIRECT WRITTEN AUTHORIZATION FROM REDGUARD, LLC

EXPORT CONTROLLED DATA: THIS DOCUMENT MAY CONTAIN TECHNICAL INFORMATION WHOSE EXPORT IS GOVERNED BY THE UNITED STATES DEPARTMENTS OF COMMERCE AND STATE. IT IS THE RESPONSIBILITY OF THE RECIPIENT(S) OF THIS DRAWING TO ENSURE THAT ITS CONTENTS ARE CONTROLLED AS SUCH TO REMAIN IN COMPLETE COMPLIANCE WITH THE U.S. ARMS EXPORT CONTROL ACT, THE INTERNATIONAL TRAFFIC IN ARMS REGULATIONS, AND THE EXPORT ADMINISTRATION ACT.



ARMODA

4817 S LEWIS ST.
 NEW IBERIA, LA 70560
 PH: 504.588.2551
 www.armoda.com

SVA

8' X 19'-10 1/2" X 9'-6"

FLOOR PLAN

A#: 019

PROJECT MANAGER: TM

DRAWN BY: JR

DATE: 1/15/2025

FILE: A-019 8X20 FP

SCALE: 1" = 1'-0"

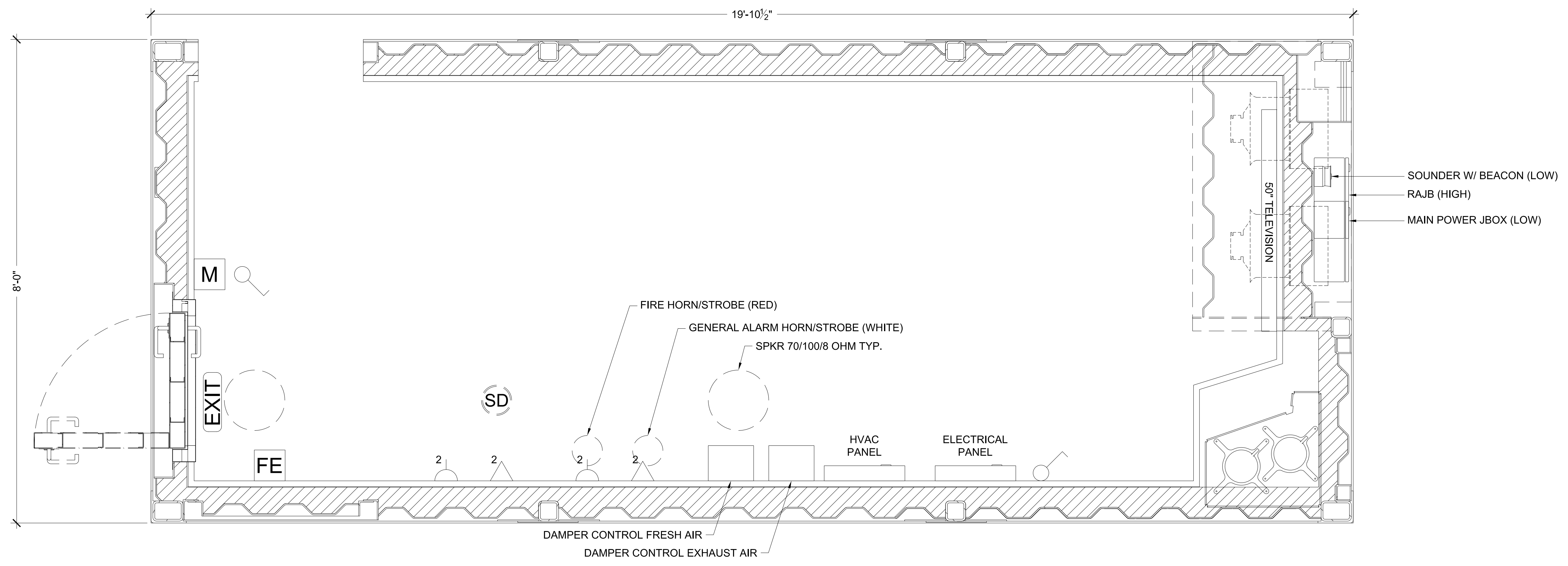
REVISION: B

SHEET: A1.2

**A-019 SUPPORT VESSELS OF ALASKA (SVA)
 DINER 1 FLOOR PLAN - Q#300031 SVA ARCTIC SEAL
 8' X 19'-10 1/2" X 9'-6"**

**SCALE LISTED IS VALID
 ONLY FOR "D" SIZE PAPER
 (36" X 24")**

REVISION HISTORY				
REV	DESCRIPTION	DATE	BY	CHECKED
A	ISSUED FOR REVIEW	1/15/2025	JR	JLL
B	UPDATED PER CUSTOMER COMMENTS	2/4/2025	JR	JLL



THE INFORMATION CONTAINED HEREIN IS PROPRIETARY TO REDGUARD, LLC AND SHALL NOT BE REPRODUCED OR DISCLOSED IN WHOLE OR IN PART OR USED FOR ANY PURPOSE EXCEPT WHEN SUCH USER POSSESSES DIRECT WRITTEN AUTHORIZATION FROM REDGUARD, LLC

EXPORT CONTROLLED DATA: THIS DOCUMENT MAY CONTAIN TECHNICAL INFORMATION WHOSE EXPORT IS GOVERNED BY THE UNITED STATES DEPARTMENTS OF COMMERCE AND STATE. IT IS THE RESPONSIBILITY OF THE RECIPIENT(S) OF THIS DRAWING TO ENSURE THAT ITS CONTENTS ARE CONTROLLED AS SUCH TO REMAIN IN COMPLETE COMPLIANCE WITH THE U.S. ARMS EXPORT CONTROL ACT, THE INTERNATIONAL TRAFFIC IN ARMS REGULATIONS, AND THE EXPORT ADMINISTRATION ACT.



ARMODA

4817 S LEWIS ST.
 NEW IBERIA, LA 70560
 PH: 504.588.2551
 www.armoda.com

SVA

8' X 19'-10 1/2" X 9'-6"

FLOOR PLAN

A#: 019

PROJECT MANAGER: TM

DRAWN BY: JR

DATE: 1/15/2025

FILE: A-019 8X20 FP

SCALE: 1" = 1'-0"

REVISION: B

SHEET: A1.3

**A-019 SUPPORT VESSELS OF ALASKA (SVA)
 DINER 2 FLOOR PLAN - Q#300031 SVA ARCTIC SEAL
 8' X 19'-10 1/2" X 9'-6"**

**SCALE LISTED IS VALID
 ONLY FOR "D" SIZE PAPER
 (36" X 24")**