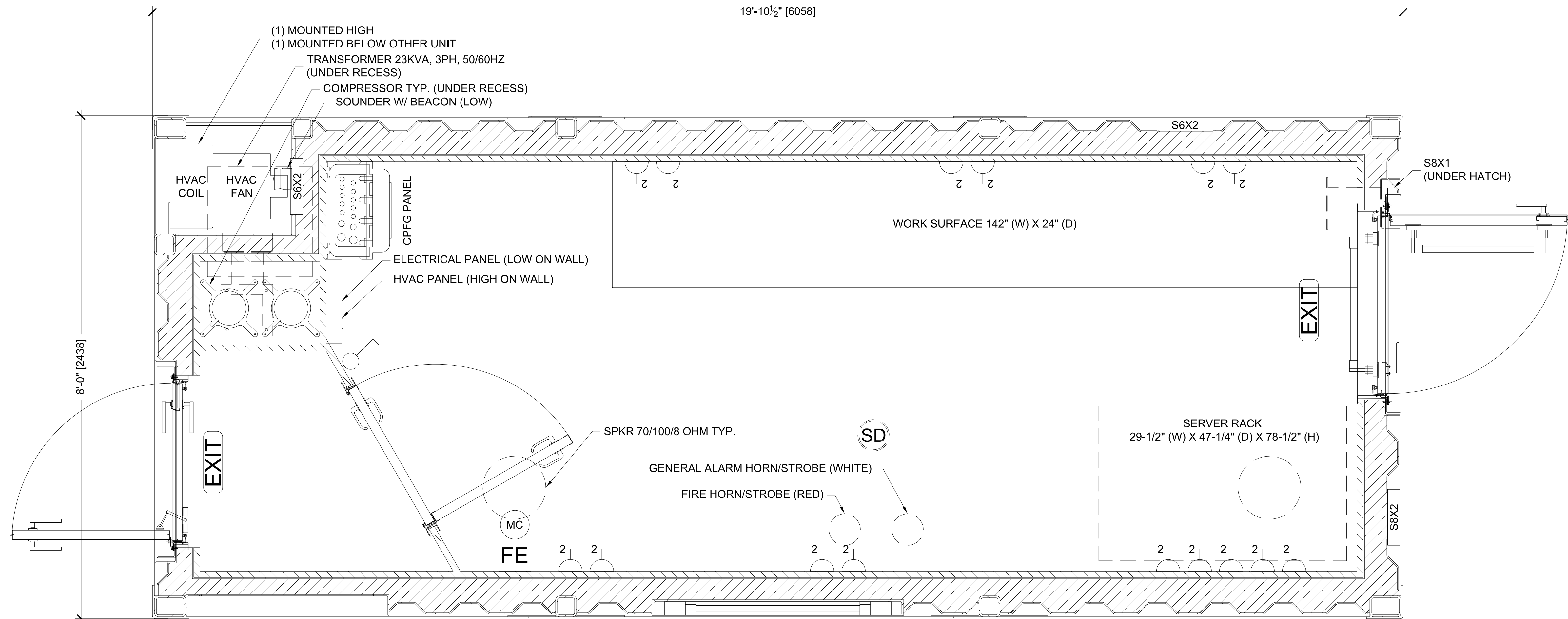


REVISION HISTORY				
REV	DESCRIPTION	DATE	BY	CHECKED
A	ISSUED FOR REVIEW / AGENCY APPROVAL	10/25/2024	JR	JLL
B	UPDATED PER STRUCTURAL CHANGES	11/18/2024	JR	JLL



THE INFORMATION CONTAINED HEREIN IS PROPRIETARY TO REDGUARD, LLC AND SHALL NOT BE REPRODUCED OR DISCLOSED IN WHOLE OR IN PART OR USED FOR ANY PURPOSE EXCEPT WHEN SUCH USER POSSESSES DIRECT WRITTEN AUTHORIZATION FROM REDGUARD, LLC

EXPORT CONTROLLED DATA: THIS DOCUMENT MAY CONTAIN TECHNICAL INFORMATION WHOSE EXPORT IS GOVERNED BY THE UNITED STATES DEPARTMENTS OF COMMERCE AND STATE. IT IS THE RESPONSIBILITY OF THE RECIPIENT(S) OF THIS DRAWING TO ENSURE THAT ITS CONTENTS ARE CONTROLLED AS SUCH TO REMAIN IN COMPLETE COMPLIANCE WITH THE U.S. ARMS EXPORT CONTROL ACT, THE INTERNATIONAL TRAFFIC IN ARMS REGULATIONS, AND THE EXPORT ADMINISTRATION ACT.



2317 ENGINEERS RD.
 BELLE CHASSE, LA 70037
 PH: 504.588.2551
 www.armoda.com

ARMODA

8' X 20' X 9'-6"

FLOOR PLAN

CP#: A20

PROJECT MANAGER: JO

DRAWN BY: JR

DATE: 10/25/2024

FILE: A20ZC 8X20 FP

SCALE: 1" = 1'-0"

REVISION: B

SHEET: A1.1

**CP# A20 ZONE CABIN ARMODA
 FLOOR PLAN - DNV 2.7-2
 8' X 20' X 9'-6"**

**SCALE LISTED IS VALID
 ONLY FOR "D" SIZE PAPER
 (36" X 24")**