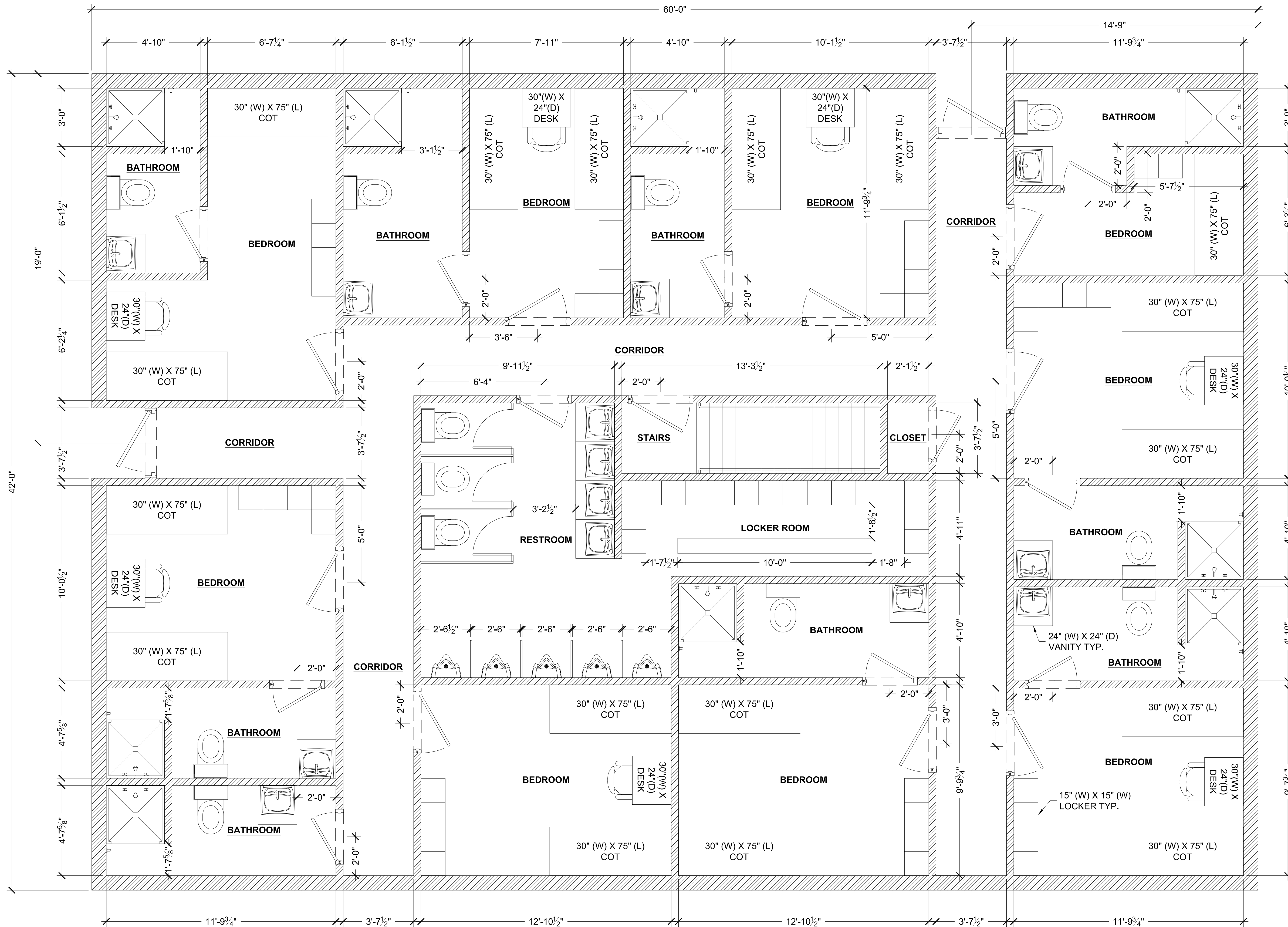


REVISION HISTORY				
REV	DESCRIPTION	DATE	BY	CHECKED
A	ISSUED FOR REVIEW	10/7/2024	JR	JLL



THE INFORMATION CONTAINED HEREIN IS PROPRIETARY TO REDGUARD, LLC AND SHALL NOT BE REPRODUCED OR DISCLOSED IN WHOLE OR IN PART OR USED FOR ANY PURPOSE EXCEPT WHEN SUCH USER POSSESSES DIRECT WRITTEN AUTHORIZATION FROM REDGUARD, LLC

EXPORT CONTROLLED DATA: THIS DOCUMENT MAY CONTAIN TECHNICAL INFORMATION WHOSE EXPORT IS GOVERNED BY THE UNITED STATES DEPARTMENTS OF COMMERCE AND STATE. IT IS THE RESPONSIBILITY OF THE RECIPIENT(S) OF THIS DRAWING TO ENSURE THAT ITS CONTENTS ARE CONTROLLED AS SUCH TO REMAIN IN COMPLETE COMPLIANCE WITH THE U.S. ARMS EXPORT CONTROL ACT, THE INTERNATIONAL TRAFFIC IN ARMS REGULATIONS, AND THE EXPORT ADMINISTRATION ACT.



4817 S LEWIS ST.
 NEW IBERIA, LA 70560
 PH: 504.588.2551
 www.armoda.com

SHELL PIPELINE

42' X 60' X 11'-6"

FLOOR PLAN

RP#: 037

PROJECT MANAGER: DP

DRAWN BY: JR

DATE: 10/7/2024

FILE: RP 037 42X60 FP

SCALE: 3/8" = 1'-0"

REVISION: A

SHEET: A1.1

**RP# 037 SHELL PIPELINE
 FLOOR PLAN - WEST DELTA 143
 42' X 60' X 11'-6"**

**SCALE LISTED IS VALID
 ONLY FOR "D" SIZE PAPER
 (36" X 24")**