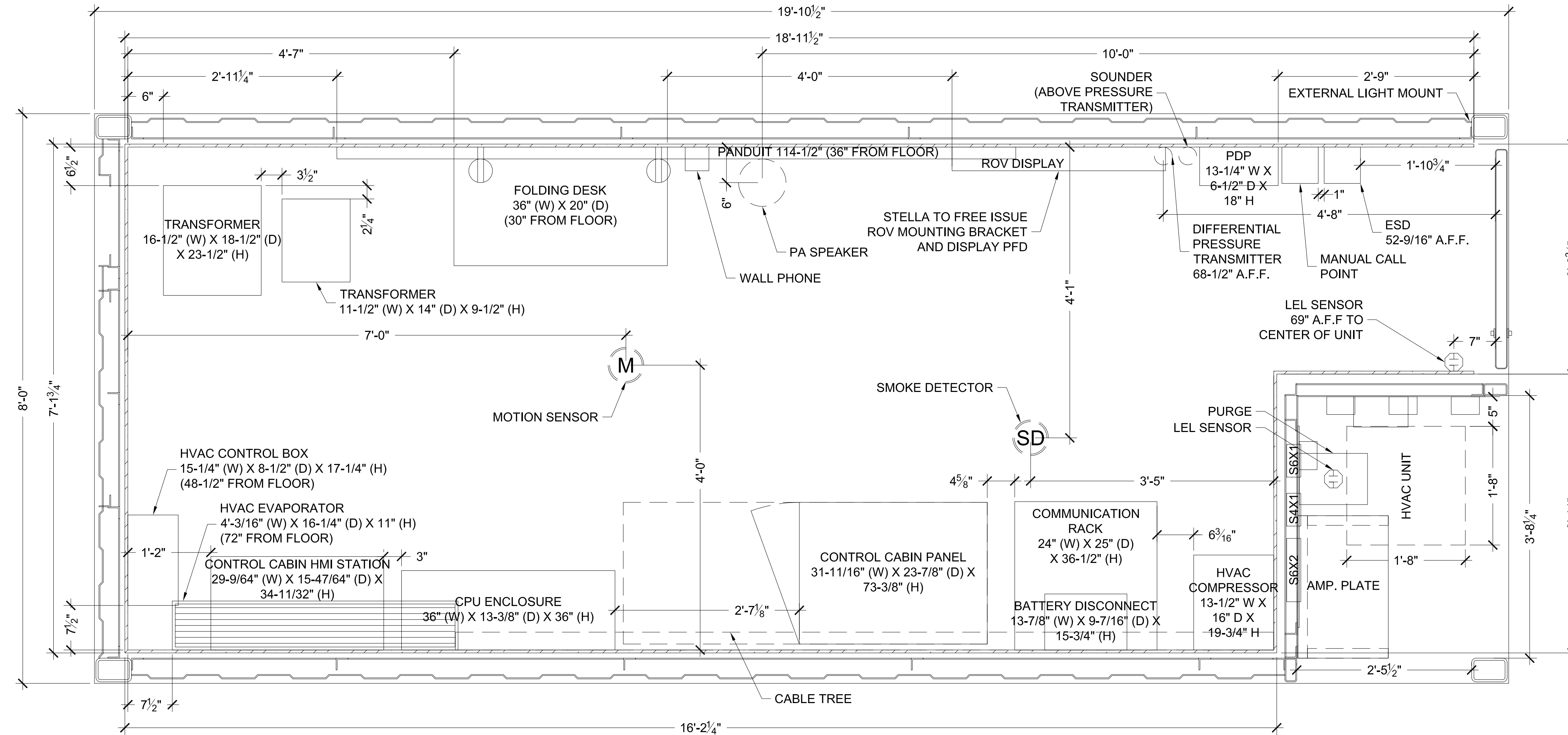


REV	DESCRIPTION	DATE	BY	CHECKED
A	ISSUED FOR REVIEW	12/11/2024	JR	JLL
B	UPDATED PER COMMENTS	12/13/2024	JR	JLL
C	UPDATED PER COMMENTS	12/16/2024	JR	JLL
D	UPDATED PER COMMENTS	1/8/2025	JR	JLL
E	UPDATED PER COMMENTS & ADDED INTERIOR ELEVATION	2/10/2025	JR	JLL
F	UPDATED PER COMMENTS	4/29/2025	JR	ACK
G	UPDATED PER COMMENTS	5/8/2025	JR	ACK



THE INFORMATION CONTAINED HEREIN IS PROPRIETARY TO REDGUARD, LLC AND SHALL NOT BE REPRODUCED OR DISCLOSED IN WHOLE OR IN PART OR USED FOR ANY PURPOSE EXCEPT WHEN SUCH USER POSSESSES DIRECT WRITTEN AUTHORIZATION FROM REDGUARD, LLC

EXPORT CONTROLLED DATA: THIS DOCUMENT MAY CONTAIN TECHNICAL INFORMATION WHOSE EXPORT IS GOVERNED BY THE UNITED STATES DEPARTMENTS OF COMMERCE AND STATE. IT IS THE RESPONSIBILITY OF THE RECIPIENT(S) OF THIS DRAWING TO ENSURE THAT ITS CONTENTS ARE CONTROLLED AS SUCH TO REMAIN IN COMPLETE COMPLIANCE WITH THE U.S. ARMS EXPORT CONTROL ACT, THE INTERNATIONAL TRAFFIC IN ARMS REGULATIONS, AND THE EXPORT ADMINISTRATION ACT.



4817 S LEWIS ST.
NEW IBERIA, LA 70560
PH: 504.588.2551
www.armoda.com

OCEANEERING

8' X 19'-10 1/2" X 8'-6"

FLOOR PLAN

RP#: 068

PROJECT MANAGER: DP

DRAWN BY: JR

DATE: 12/11/2024

FILE: RP 068 8X20 FP

SCALE: 1" = 1'-0"

REVISION: G

SHEET: A1.1

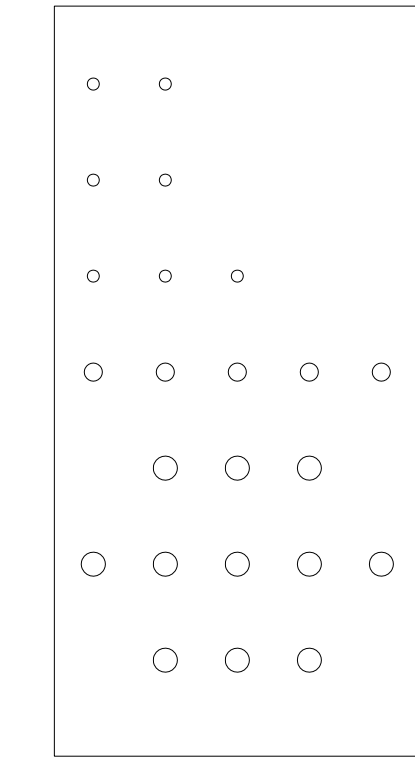
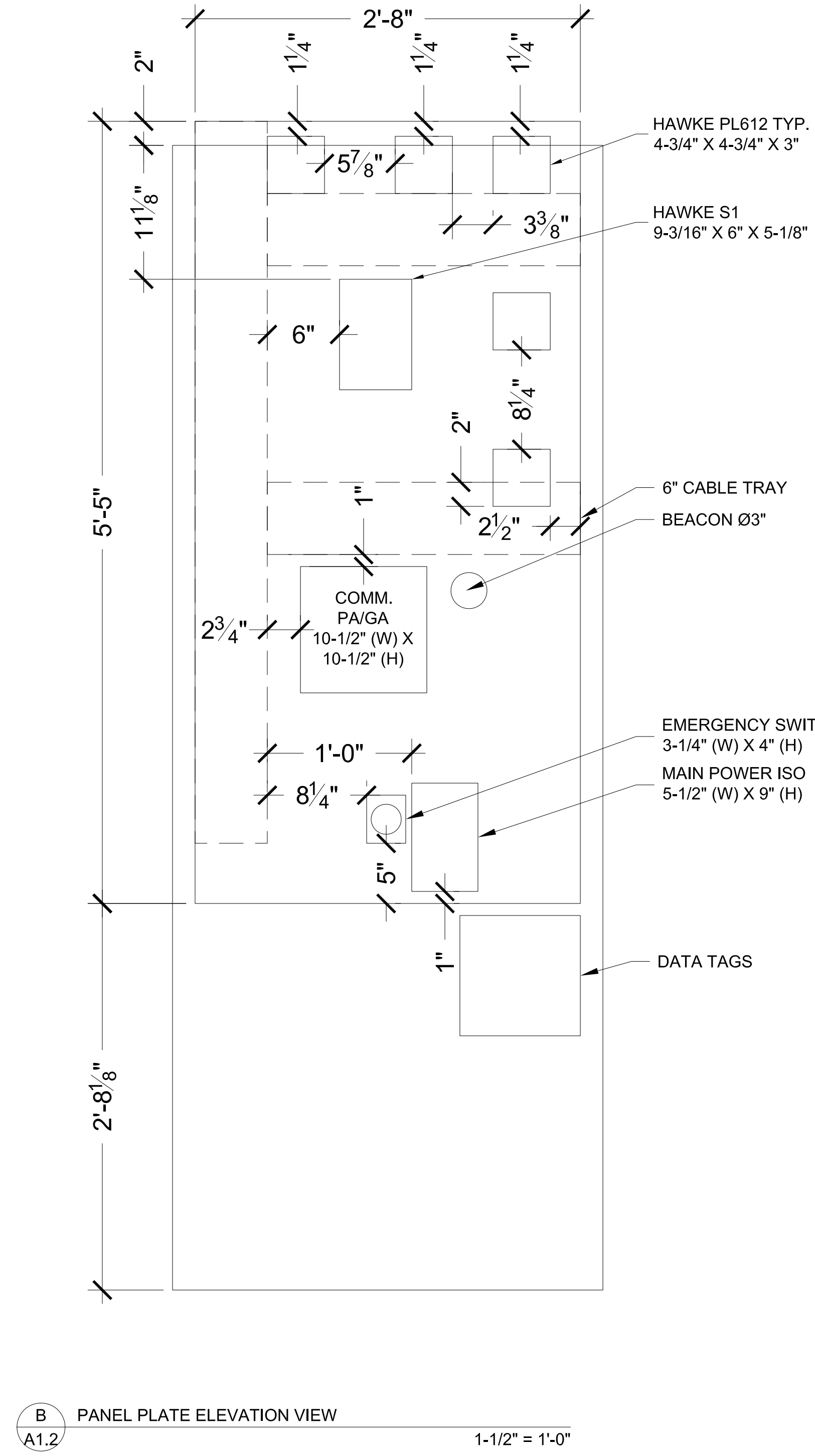
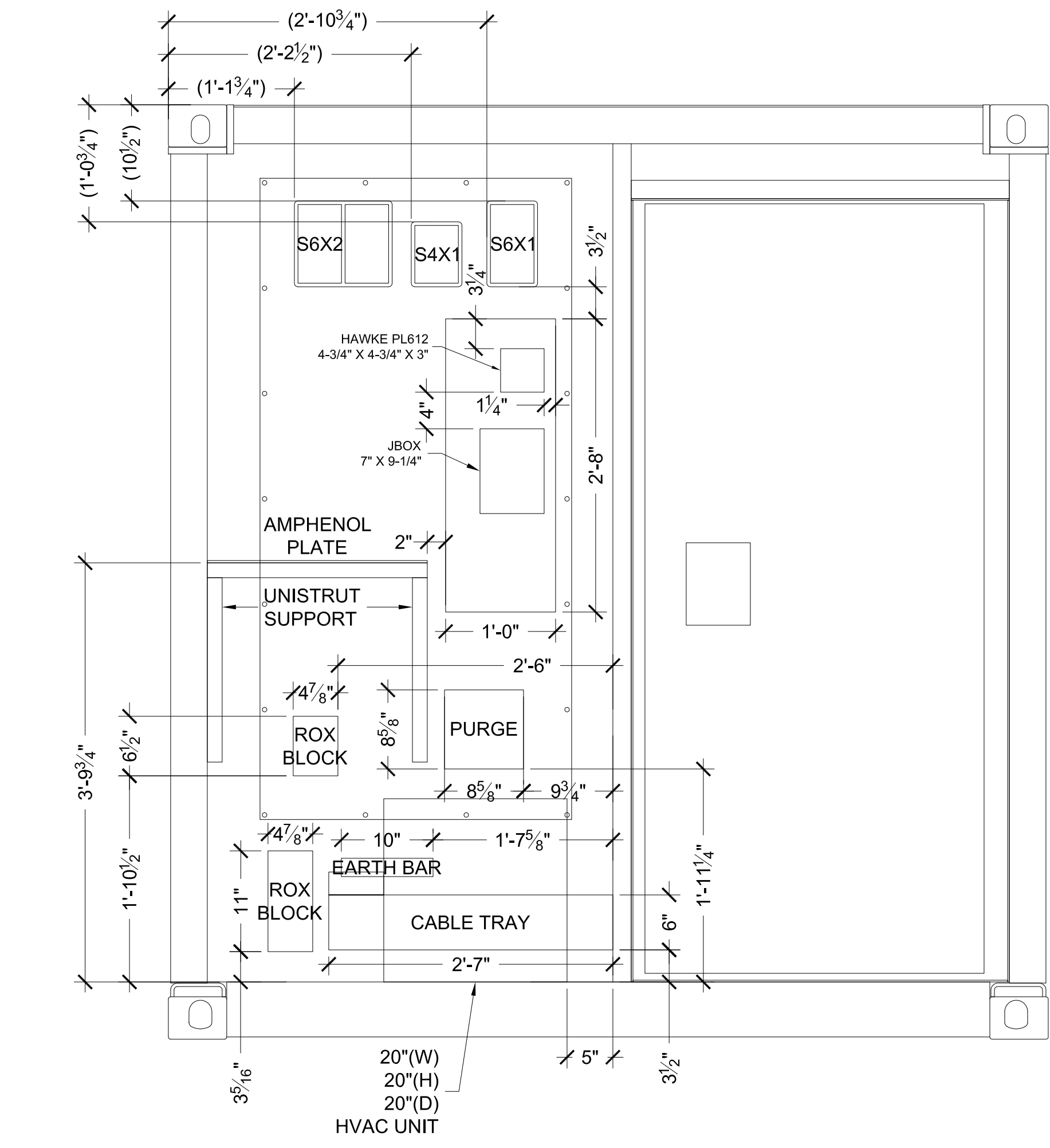
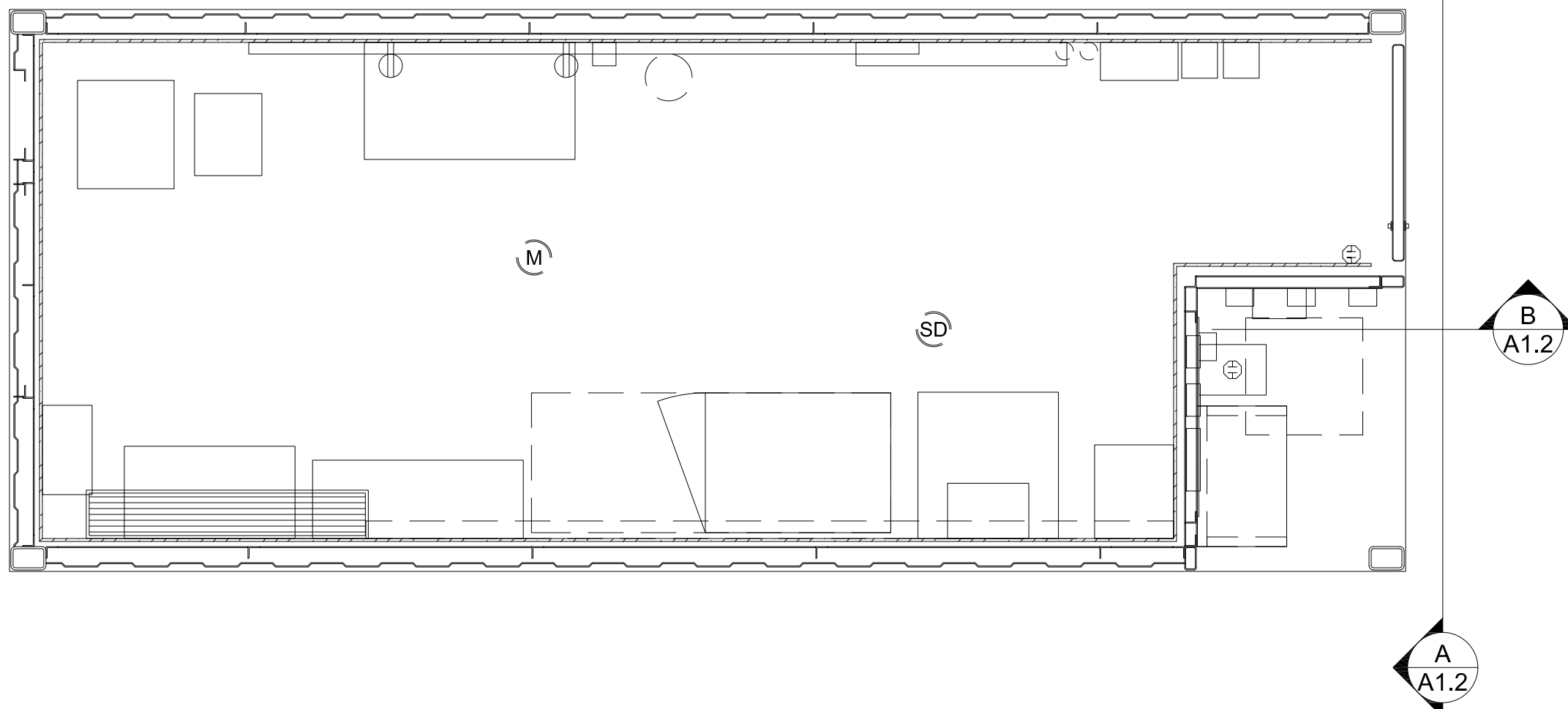
NOTES:

- CUSTOMER TO PROVIDE AMPHENOL PLATE DESIGN
- CABLE GLANDS MAY AFFECT J-BOX LAYOUT
- WALL PLATE SUPPORT MAY AFFECT ROXTEC FRAME PLACEMENT
- WIDE BASKET TRAY WILL BE RUN ABOVE DPR EQUIPMENT (FROM ROXTEC BLOCKS TO ABOVE CPU ENCLOSURE)
- HORIZONTAL TRANSVERSE CABLE TRAY TO BE PROVIDED RUNNING ACROSS WALL FROM COMMUNICATION RACK TO CONTROL CABIN HMI PANEL
- PA SPEAKER WITH CABLE TO JUNCTION BOX AND PHONE WITH CABLE TO JUNCTION BOX TO BE SOURCED OUT
- STARLINK RECEIVER / TRANSMITTER (ANTENNA) TO BE SOURCED OUT
- POWER RUN FROM PDP TO DPR CCP, MULTI-PAIR CABLE FROM COMMS / PA TO DPR CCP FOR REQUIRED ALARMS, POWER FROM EMERGENCY DISCONNECT TO CCP WILL BE DISCUSSED
- CAT 7 FROM FOLDING DESK TO COMMUNICATIONS RACK (ADDITIONAL JOB SCOPE)
- UNISTRUT TO BE 7/8" DEEP, 1-5/8" (W) TYP.

**RP# 068 OCEANEERING
FLOOR PLAN - CONTROL VAN 7018
8' X 19'-10 1/2" X 8'-6"**

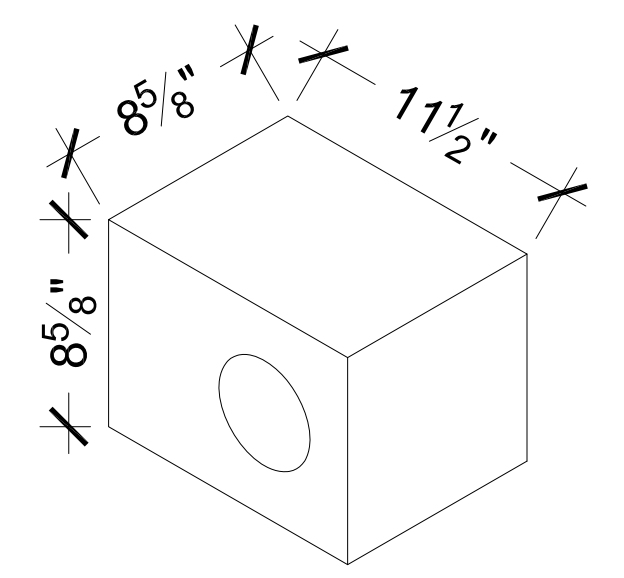
**SCALE LISTED IS VALID
ONLY FOR "D" SIZE PAPER
(36" X 24")**

REVISION HISTORY				
REV	DESCRIPTION	DATE	BY	CHECKED
A	ISSUED FOR REVIEW	12/11/2024	JR	JLL
B	UPDATED PER COMMENTS	12/13/2024	JR	JLL
C	UPDATED PER COMMENTS	12/16/2024	JR	JLL
D	UPDATED PER COMMENTS	1/8/2025	JR	JLL
E	UPDATED PER COMMENTS & ADDED INTERIOR ELEVATION	2/10/2025	JR	JLL
F	UPDATED PER COMMENTS	4/29/2025	JR	ACK
G	UPDATED PER COMMENTS	5/8/2025	JR	ACK



TO BE FINALIZED BY STELLA MARIS ONCE THE EXTERNAL LAYOUT BY ARMODA IS CONFIRMED. CLEARANCE DETAILS FROM ARMODA ARE REQUIRED TO PROCEED

D AMPHENOL PLATE NTS



C PURGE ISOMETRIC VIEW NTS

NOTES:

- CUSTOMER TO PROVIDE AMPHENOL PLATE DESIGN
- CABLE GLANDS MAY AFFECT J-BOX LAYOUT
- WALL PLATE SUPPORT MAY AFFECT ROXTEC FRAME PLACEMENT
- WIDE BASKET TRAY WILL BE RUN ABOVE DPR EQUIPMENT (FROM ROXTEC BLOCKS TO ABOVE CPU ENCLOSURE)
- HORIZONTAL TRANSVERSE CABLE TRAY TO BE PROVIDED RUNNING ACROSS WALL FROM COMMUNICATION RACK TO CONTROL CABIN HMI PANEL
- PA SPEAKER WITH CABLE TO JUNCTION BOX AND PHONE WITH CABLE TO JUNCTION BOX TO BE SOURCED OUT
- STARLINK RECEIVER / TRANSMITTER (ANTENNA) TO BE SOURCED OUT
- POWER RUN FROM PDP TO DPR CCP, MULTI-PAIR CABLE FROM COMMS / PA TO DPR CCP FOR REQUIRED ALARMS, POWER FROM EMERGENCY DISCONNECT TO CCP WILL BE DISCUSSED
- CAT 7 FROM FOLDING DESK TO COMMUNICATIONS RACK (ADDITIONAL JOB SCOPE)
- UNISTRUT TO BE 7/8" DEEP, 1-5/8" (W) TYP.

THE INFORMATION CONTAINED HEREIN IS PROPRIETARY TO REDGUARD, LLC AND SHALL NOT BE REPRODUCED OR DISCLOSED IN WHOLE OR IN PART OR USED FOR ANY PURPOSE EXCEPT WHEN SUCH USER POSSESSES DIRECT WRITTEN AUTHORIZATION FROM REDGUARD, LLC

EXPORT CONTROLLED DATA: THIS DOCUMENT MAY CONTAIN TECHNICAL INFORMATION WHOSE EXPORT IS GOVERNED BY THE UNITED STATES DEPARTMENTS OF COMMERCE AND STATE. IT IS THE RESPONSIBILITY OF THE RECIPIENT(S) OF THIS DRAWING TO ENSURE THAT ITS CONTENTS ARE CONTROLLED AS SUCH TO REMAIN IN COMPLETE COMPLIANCE WITH THE U.S. ARMS EXPORT CONTROL ACT, THE INTERNATIONAL TRAFFIC IN ARMS REGULATIONS, AND THE EXPORT ADMINISTRATION ACT.



4817 S LEWIS ST.
NEW IBERIA, LA 70560
PH: 504.588.2551
www.armoda.com

OCEANEERING

8' X 19'-10 1/2" X 8'-6"

OVERALL VIEWS

RP#: 068

PROJECT MANAGER: DP

DRAWN BY: JR

DATE: 12/11/2024

FILE: RP 068 8X20 FP

SCALE: SEE DETAILS

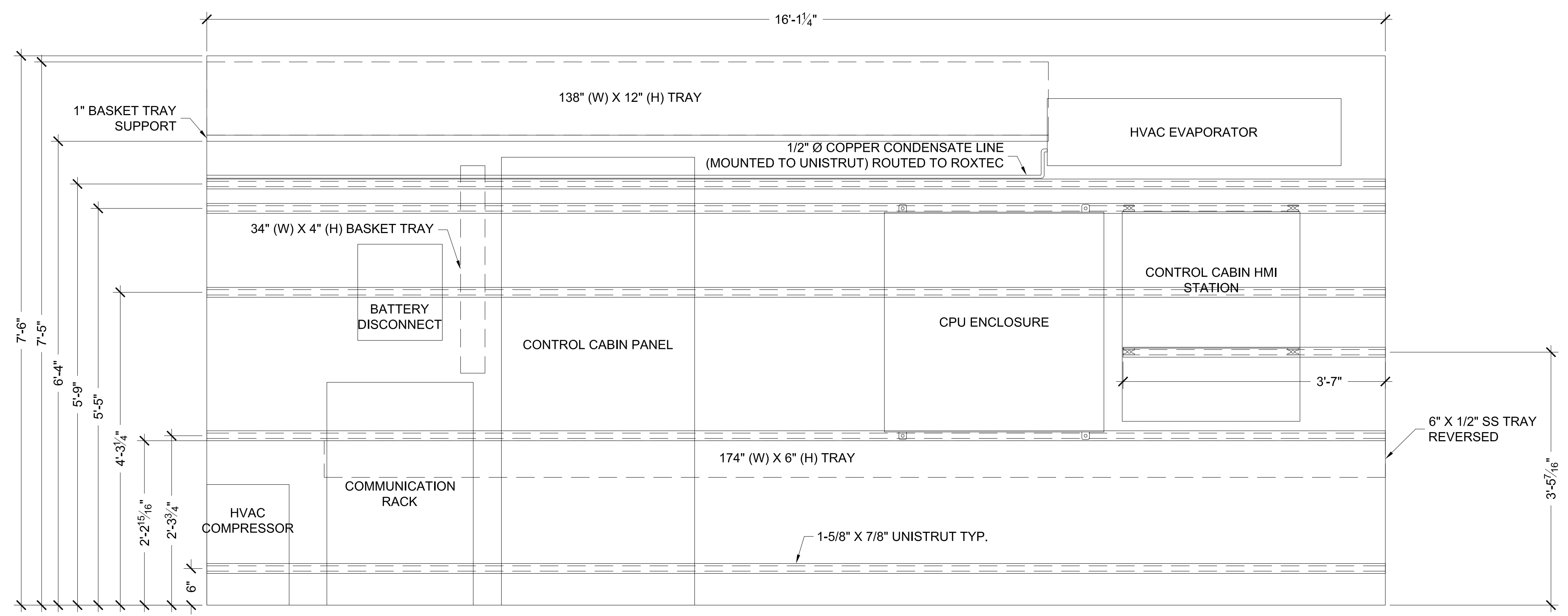
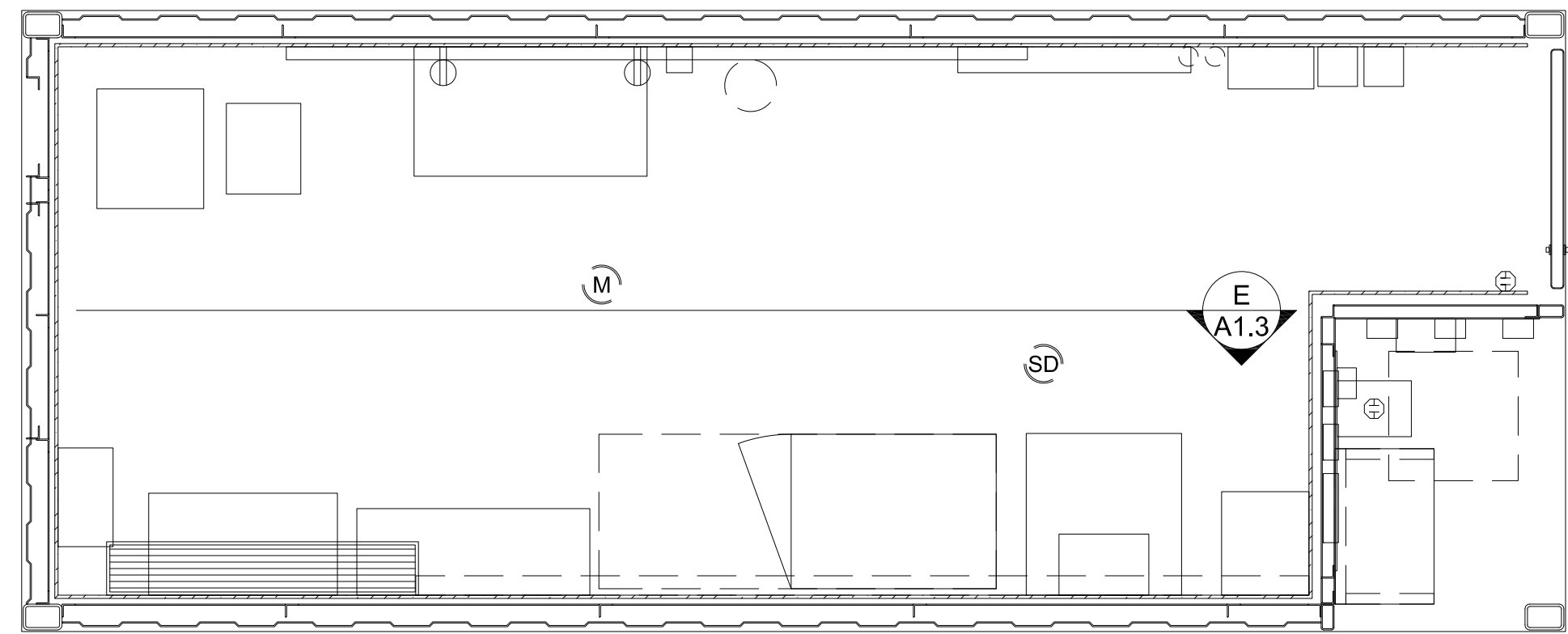
REVISION: G

SHEET: A1.2

**RP# 068 OCEANEERING
OVERALL VIEWS - CONTROL VAN 7018
8' X 19'-10 1/2" X 8'-6"**

**SCALE LISTED IS VALID
ONLY FOR "D" SIZE PAPER
(36" X 24")**

REVISION HISTORY				
REV	DESCRIPTION	DATE	BY	CHECKED
A	ISSUED FOR REVIEW	12/11/2024	JR	JLL
B	UPDATED PER COMMENTS	12/13/2024	JR	JLL
C	UPDATED PER COMMENTS	12/16/2024	JR	JLL
D	UPDATED PER COMMENTS	1/8/2025	JR	JLL
E	UPDATED PER COMMENTS & ADDED INTERIOR ELEVATION	2/10/2025	JR	JLL
F	UPDATED PER COMMENTS	4/29/2025	JR	ACK
G	UPDATED PER COMMENTS	5/8/2025	JR	ACK



E
A1.3 INTERIOR ELEVATION
1" = 1'-0"

**RP# 068 OCEANEERING
OVERALL VIEWS - CONTROL VAN 7018
8' X 19'-10 1/2" X 8'-6"**

- NOTES:**
- CUSTOMER TO PROVIDE AMPHENOL PLATE DESIGN
 - CABLE GLANDS MAY AFFECT J-BOX LAYOUT
 - WALL PLATE SUPPORT MAY AFFECT ROXTEC FRAME PLACEMENT
 - WIDE BASKET TRAY WILL BE RUN ABOVE DPR EQUIPMENT (FROM ROXTEC BLOCKS TO ABOVE CPU ENCLOSURE)
 - HORIZONTAL TRANSVERSE CABLE TRAY TO BE PROVIDED RUNNING ACROSS WALL FROM COMMUNICATION RACK TO CONTROL CABIN HMI PANEL
 - PA SPEAKER WITH CABLE TO JUNCTION BOX AND PHONE WITH CABLE TO JUNCTION BOX TO BE SOURCED OUT
 - STARLINK RECEIVER / TRANSMITTER (ANTENNA) TO BE SOURCED OUT
 - POWER RUN FROM PDP TO DPR CCP, MULTI-PAIR CABLE FROM COMMS / PA TO DPR CCP FOR REQUIRED ALARMS, POWER FROM EMERGENCY DISCONNECT TO CCP WILL BE DISCUSSED
 - CAT 7 FROM FOLDING DESK TO COMMUNICATIONS RACK (ADDITIONAL JOB SCOPE)
 - UNISTRUT TO BE 7/8" DEEP, 1-5/8" (W) TYP.

**SCALE LISTED IS VALID
ONLY FOR "D" SIZE PAPER
(36" X 24")**

THE INFORMATION CONTAINED HEREIN IS PROPRIETARY TO REDGUARD, LLC AND SHALL NOT BE REPRODUCED OR DISCLOSED IN WHOLE OR IN PART OR USED FOR ANY PURPOSE EXCEPT WHEN SUCH USER POSSESSES DIRECT WRITTEN AUTHORIZATION FROM REDGUARD, LLC

EXPORT CONTROLLED DATA: THIS DOCUMENT MAY CONTAIN TECHNICAL INFORMATION WHOSE EXPORT IS GOVERNED BY THE UNITED STATES DEPARTMENTS OF COMMERCE AND STATE. IT IS THE RESPONSIBILITY OF THE RECIPIENT(S) OF THIS DRAWING TO ENSURE THAT ITS CONTENTS ARE CONTROLLED AS SUCH TO REMAIN IN COMPLETE COMPLIANCE WITH THE U.S. ARMS EXPORT CONTROL ACT, THE INTERNATIONAL TRAFFIC IN ARMS REGULATIONS, AND THE EXPORT ADMINISTRATION ACT.



4817 S LEWIS ST.
NEW IBERIA, LA 70560
PH: 504.588.2551
www.armoda.com

OCEANEERING

8' X 19'-10 1/2" X 8'-6"

OVERALL VIEWS

RP#: 068

PROJECT MANAGER: DP

DRAWN BY: JR

DATE: 12/11/2024

FILE: RP 068 8X20 FP

SCALE: SEE DETAILS

REVISION: G

SHEET: A1.3